



ARIATM SONIC SKIN CLEANSING

User Guide

Three Speeds

Adjustable T-Timer[®]

Battery Life Indicator

Drying Stand + Detachable pLink Charger

Beautiful skin begins with cleaner skin.
Cleaner skin begins with Clarisonic.



Become a **Clarisonic Preferred Customer**

Details on back

IMPORTANT SAFEGUARDS

When using electrical products, especially when children are present, basic safety precautions should always be followed, including but not limited to the following:

READ ALL INSTRUCTIONS BEFORE USE

DANGER—To reduce the risk of electrocution:

1. **Do not** place or store the pLink® charger or plug where it can fall or be pulled into a tub or sink.
2. **Do not** place the pLink charger in or drop the charger or plug into water or other liquid. Charger unit is not for immersion or for use in the shower.
3. **Do not** reach for a pLink charger or plug that has fallen into water. Unplug immediately.

WARNING – To reduce the risk of burns, electrocution, fire, or injury to persons:

1. Close supervision is necessary when this product is used by, on, or near children or physically challenged persons.
2. Use this product only for its intended use as described in this manual.
Do not use attachments not recommended by the manufacturer.
3. Keep the cord away from heated surfaces.
4. Never use while sleeping or drowsy.
5. Do not use the charger outdoors.
6. Do not use where oxygen is being administered.
7. For best performance, please use the Power Adapter supplied with the unit.

Never operate the Clarisonic brush handle if it is damaged. Do not operate the charger if it has a damaged cord or plug, if it is not working properly, if it has been dropped or damaged, or dropped into water. Call Clarisonic at 888-525-2747.

SAVE THESE INSTRUCTIONS

The handle, charger and power adapter have no serviceable parts.

The supply cord cannot be replaced. If the cord is damaged, the charger must be unplugged and replaced. Call Clarisonic at 888-525-2747.

FCC Statement: This equipment has been tested and found to comply with the limits for a class B digital device, pursuant to Part 15 of the FCC Rules. For further details, please see our website.

IMPORTANT CAUTIONS AND WARNINGS

If you are under a doctor's care for any skin condition or if you think you may have a skin condition, please consult your physician before using the Clarisonic Aria. Refer to our website for more information.

We recommend that you **do not** share brush heads.

We recommend that you start with one of the Clarisonic cleansers that have been optimized for gentle daily use with Clarisonic Skin Cleansing Systems. **Do not** use Aria with jagged exfoliating particles such as shells. Clarisonic brushes may be used with soft, rounded exfoliating particles.

Using Aria to remove makeup may stain the bristles, but will not affect performance. If discoloration occurs, clean the brush head with soap and water.

This product uses magnets.



YOUR CLARISONIC® Aria

The essential first step in your daily skin care ritual, Clarisonic Aria is a professional-caliber skin care brush that uses patented sonic technology that works with skin's natural elasticity to gently massage away impurities trapped within pores. Clarisonic Aria cleanses 6x better than cleansing with your hands alone†. Without harsh abrasion or chemicals, Aria's sonic action cleanses so effectively that skin and pores are free from impurities and your topical skin care products absorb better. The Aria handle is waterproof for use in the shower or bathtub. Refer to Important Safeguards regarding the charger.

† Data on file.

READ ALL INSTRUCTIONS BEFORE USE

TO USE

Prior to the first use, charge the Clarisonic Aria handle for 24 hours.

- If you use makeup, remove eye makeup by hand.
- Wet your skin and the brush head with warm water.
- Liberally apply cleanser to your skin or to the brush head.
- Push the on/off button to turn on your Aria.
- Select desired speed.
- Follow T-TIMER® prompts while gently moving brush head in small circular motions.
- Aria will automatically shut off after one minute.

NOTE: Keep brush head flush to the skin. Pressing too hard will impede the motion and reduce effectiveness.

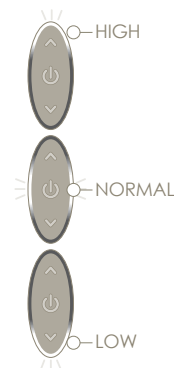
FEATURES OF YOUR CLARISONIC Aria

SPEED SETTINGS

The Aria offers a choice of 3 speeds: low, normal and high. To change speeds, press the speed up or down buttons while the Aria is on. The factory setting is low speed. Speed is indicated visually on the illuminated bezel surrounding the button pad.

Speed settings for facial cleansing

Speed	Visible indication
High	upper LED light on
Normal	middle LED light on
Low	lower LED light on



CLEANSING TIMER (T-TIMER®)

For even and thorough cleansing of your face, the Aria features a proprietary T-TIMER that beeps and pulses momentarily to indicate it is time to move to another part of your face. We recommend the factory setting one-minute cycle time: 20 seconds on your forehead, 20 seconds on your nose/chin, and 10 seconds on each cheek, however, the T-TIMER is adjustable to a 2 minute cycle time. T-TIMER settings for facial cleansing are indicated by different audible sequences. To change the

cycle time setting, when the Aria is off, press and hold the speed up button. Aria will beep 2 times to acknowledge the 2 minute setting. To switch back to a 1 minute T-TIMER cycle time, when the Aria is off, press and hold the speed down button. Aria will beep once to acknowledge the 1 minute setting. From use to use, Aria will remain in the selected cycle time unless it is changed.

Cleansing Duration	T-Timer Beeps & Pulses
1 minute	at 20, 40, 50 seconds
2 minutes	at 40, 80, 100 seconds

CHARGING

The pLink® charger allows Aria to be rechargeable. A fully charged Aria averages 28 minutes of use depending on the speed at which it is run. The convenient pLink charger magnetically attaches to the Aria handle as shown.



Charge Indicators

Action	Indicator
Attach pLink charger	Handle emits a 2 tone beep
Charge the handle	The illuminated bezel around the button fades in and out while charging. When fully charged, the illuminated bezel glows solid.
After 24 minutes of use	The handle beeps 3 times and the illuminated bezel will flash for 10 seconds indicating that the handle needs to be charged. Allow approximately 18 hours for a full charge.

The pLink charger is compatible with 100-240 Volts AC; 50/60Hz, allowing it to be used worldwide with the appropriate country adapter. If the shape of the plug does not fit the power outlet, use an attachment plug adapter of the proper configuration for the power outlet.

NOTE: The Aria handle is not compatible with the charging cradle for the full-size Clarisonic models.

BATTERY LIFE

Aria is outfitted with a real time battery life indicator located just below the power down button. At the beginning and end of a run cycle the light will be lit white, yellow or red depending on the amount of battery life available.

Indicator Color	Battery Life Level	Minutes of Charge Available
White	High	10 - 28 minutes
Yellow	Medium	7 - 9 minutes
Red	Low	4 - 6 minutes
Flashing Red + BEZEL	Almost Empty	Less than 3.5 minutes
Flashing Red + BEZEL + 3 Beeps	Empty	No Charge

We recommend charging your Aria on a regular basis. If the Aria is unplugged and stored for a long period of time the batteries could drain and not recharge.

STORING

When not in use, Aria can be stored in it's dual-functioning stand. This uniquely designed accessory is a drying stand which also serves as a charging base when the pLink is attached. The pLink fits perfectly in the stand or the pLink can be attached to the handle and charged outside the dual-function stand. A traditional wall mount AC adaptor and a USB plug are included for charging options. The USB-enabled cord is great for travel.

DRYING STAND

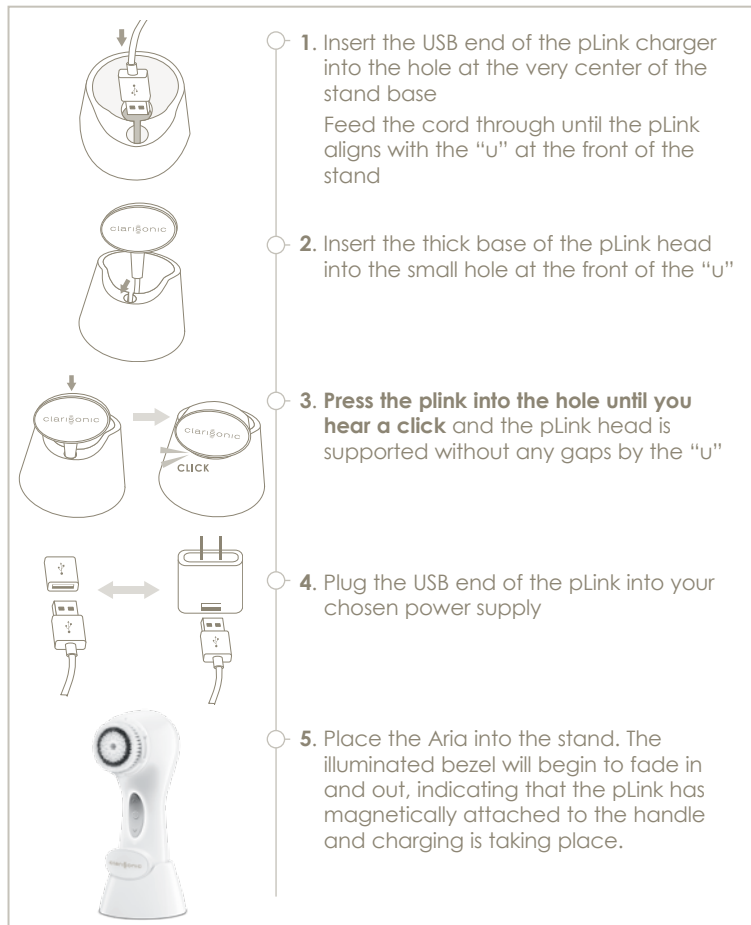
As a drying stand, the stand can be used on your bathroom counter, in the shower, or wherever you prefer to store or display your Aria.

1. Place the stand so that the "U" shaped curve is facing towards you.
2. Insert Aria with the brush head facing towards you as well. The "u" curve of the stand will fall below the button and battery life indicator.



CHARGING STAND

In order for the stand to act as a charging stand you will need to attach the magnetic pLink charger.



CARING FOR YOUR Aria

To keep your Aria in optimum condition, care for it as follows. Do not use abrasive cleansers or chemicals to clean any part of the Aria. Do not put any part of the Aria in the dishwasher.

HANDLE

Once a week remove the brush head and wash the handle using warm soapy water to remove any residue. The handle is sealed and fully waterproof. Never attempt to open the brush handle for any reason.

pLink CHARGER

IMPORTANT: Unplug the pLink charger, then wipe it with a soft, damp cloth. Do not immerse the charger in water.

DRYING STAND

Remove the pLink® charger from the drying stand. Wipe the drying stand with a soft, damp cloth.

BRUSH HEADS

We recommend that the Clarisonic brush head be replaced every 3 months as the bristles become fatigued and less effective over time.

To remove the brush head, ① Grip the brush head firmly, then push and twist it counter-clockwise (like a medicine cap). ② Pull the head away from the handle.

To attach the brush head, push down and twist the head clockwise until it snaps into place. Be sure you hear a tight snap.

TIP: Use the brush head cap to easily remove and attach the brush head with a simple twist.



CLARISONIC® CUSTOMER SERVICE AND LIMITED WARRANTY INFORMATION

Congratulations on your purchase! We value our customers and aim to provide the highest quality products to ensure customer satisfaction. Please use this as your reference for any customer service or warranty needs you may have in the future. We also encourage you to register your product at www.clarisonic.com/registration.

We are happy to offer a 90 day money back guarantee. If you are for any reason dissatisfied with the purchase of your Aria from an authorized dealer, call Customer Service at 888-525-2747 to make arrangements for the return.

Clarisonic's warranty obligations are limited to the terms set out below.

1. Warranty Coverage:

- a) For the duration of the Warranty Period, Clarisonic warrants the Product against defects in materials and workmanship arising from Normal Use of the Product.
- b) If there is a defect in the Product which is covered by this Limited Warranty, Clarisonic agrees to exchange the Product with a new equivalent Product. This is the sole remedy available for breach of warranty.
- c) This Limited Warranty is exclusive of all other warranties, whether oral or written, express or implied. There are no implied warranties created by the manufacture, sale, or use of the Product. If Clarisonic cannot lawfully disclaim implied warranties under this Limited Warranty, all such warranties, including warranty of merchantability and fitness for a particular purpose, are limited in duration of this Limited Warranty. Some States do not allow limitations on how long an implied warranty lasts, so this limitation may not apply to you.

2. How to get warranty service or for general customer service inquiries:

In order to receive service under this Limited Warranty, please call Customer Service at 1-888-525-2747 who will direct you how to proceed.

3. Limitations:

- a) This warranty is limited and may be relied upon only:
 - (i) by the original end user of Clarisonic's Product; and

- (ii) where the Product was manufactured by or for Clarisonic and sold by an authorized distributor.

- b) To obtain service under this Limited Warranty, you will be required to provide Clarisonic with original proof of purchase date or you must have registered your Product. Registering your Product permits Clarisonic to contact you in the event of a product question or recall, allows you to sign up to receive future correspondence from us and gives you easy access to the latest Clarisonic news and information.
- c) This Limited Warranty does not apply where the Product is subjected to use that does not constitute Normal Use, including but not limited to personal injury or property damage arising from misuse of the Product.

4. Exclusions:

Clarisonic is not responsible for any indirect, incidental, special or consequential damages arising out of the use of the Product, whether arising from an electrical issue or otherwise. Some States do not allow the exclusion or limitation of incidental or consequential damages, so the above limitation or exclusion may not apply to you.

5. Validity:

This Limited Warranty is valid only in the USA.

6. Definitions:

- a) "Normal Use" means ordinary consumer use under normal home conditions according to the instruction manual included with the Product. It does not include using the Product with a voltage converter.
- b) "Product" means **Aria**.
- c) "Warranty Period" means **2 years** from the date of purchase of the Product.*

*Aria models purchased from skin care professionals have a 3 year warranty.

REGISTER TODAY

Register to become a Clarisonic Preferred Customer

To register your Clarisonic Aria go to www.clarisonic.com/registration. Sign up for Clarisonic Email and gain access to sneak previews of new product introductions and great insider skin care tips.

888-525-2747 | clarisonic.com

Clarisonic respects your privacy; we do not share your personal information with any third parties.

Visit clarisonic.com for more comprehensive information including product user guide updates, customer reviews, frequently asked questions, and more.



© 2012 Pacific Bioscience Laboratories, Inc.
All rights reserved. Clarisonic, pLink and T-TIMER
are registered trademarks and Aria is a trademark
of Pacific Bioscience Laboratories, Inc.

Pacific Bioscience Laboratories, Inc.
17275 Northeast 67th Court
Redmond, WA 98052 USA
Toll Free: 888-5-CLARISONIC or 888-525-2747
Assembled in USA.

PBL06390